

Connecting a Metrologic MS9535 to a USB BT Adapter (Client Mode)


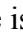
I. Scope

This document will provide a brief description of how to connect the Metrologic MS9535-5 scanner to a USB Bluetooth Adapter in client mode. The MS9535 is defaulted to act as a client when connected to other Bluetooth devices. Communication is established by scanning the Bluetooth address code of the other device.

There are many users who are connecting directly to Bluetooth enabled hosts either through an integrated Bluetooth radio or through a USB adapter (like the dongle shown above). The *MK9535-79x5* is a non-interface kit created especially for these applications. This kit is sold at a reduced cost by removing the interface board from the cradle; the cradle is used for charging the battery only.

Note: USB adapters differ from manufacturer to manufacturer. This document was based on an adapter from AmbiCom and screen shots may differ based on the manufacturer of the USB adapter you are using.

II. Getting Started


1. Install the software that is supplied with the USB dongle according to the manufacturers instructions. There are several tools available that are common to many Bluetooth adapters. Once the software is installed, a Bluetooth tray icon is placed next to the clock and a My Bluetooth Places icon appears on the desktop. These allow you to configure the USB adapter to either find available Bluetooth devices or to be discoverable.
2. The color of the icon determines the status of the USB Bluetooth device. If the icon appears to be filled with red,  the host cannot find the Bluetooth device, it might not be installed correctly or the USB port might not be active. If the icon is filled with white,  the device is ready.

III. Connecting VoyagerBT with other Bluetooth-Enabled Devices

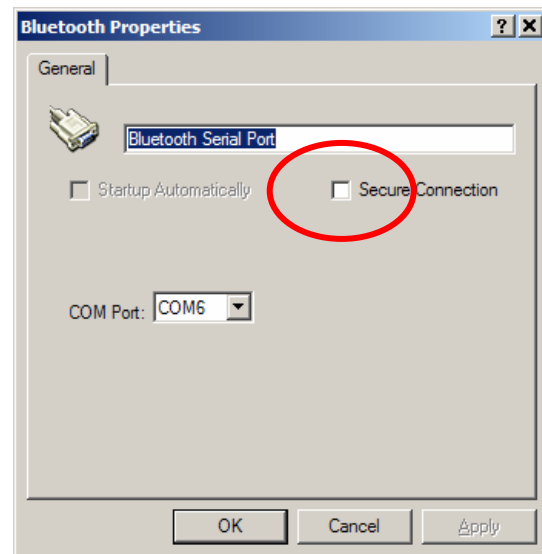
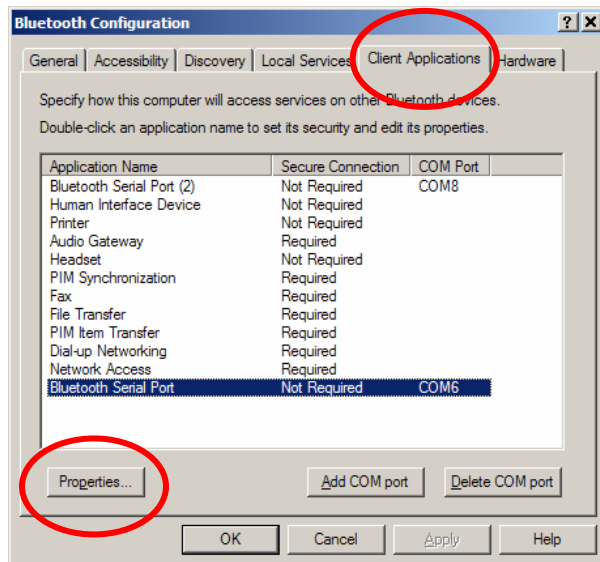
Please follow the below instructions to configure a MS9535-5 scanner to communicate with a USB dongle in client mode.

- **Disable Secure Connection**
- **Acquire Bluetooth Address from the USB adapter.**
- **Rename Device**
- **Initiate Connection**
- **Validate connection using HyperTerminal**
- **Use Softwedge utility to communicate directly to PC applications expecting keyboard data.**


1. Disable Secure Connection

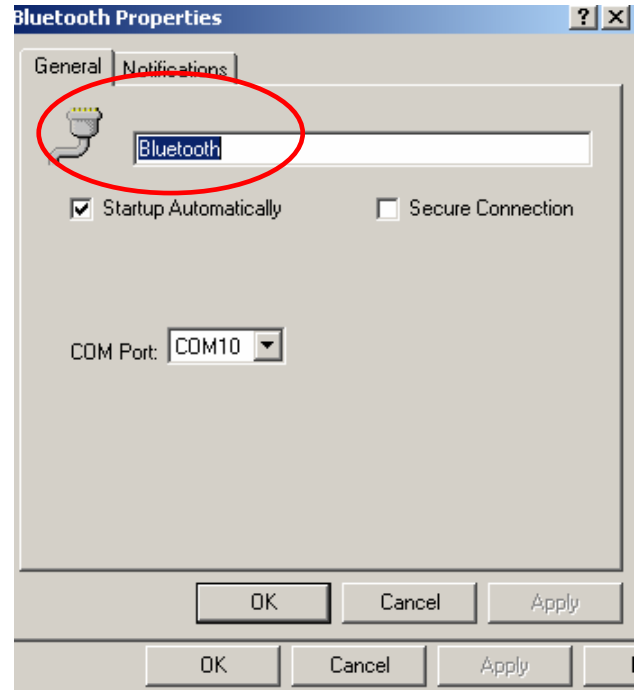
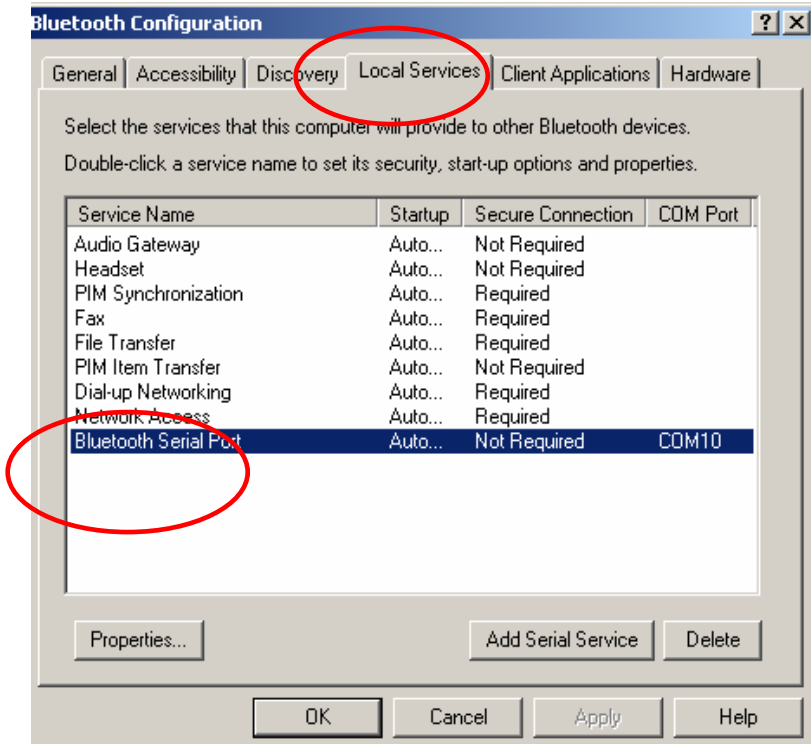
Disable Secure Connection. Right click on the  next to the clock and go to Advanced Configuration and click on the Client Applications Tab (see below left), highlight Bluetooth Serial Port and click Properties. Deselect the Secure Connection check box in the properties box that opens (Below Right) and click OK.

Repeat above procedure for the Local Services Tab.




2. Rename Device

Right click on the  next to the clock and go to Advanced Configuration and click on the Local Services Tab (see below left), highlight Bluetooth Serial Port and click Properties, rename to “Bluetooth” (below right) and click OK.

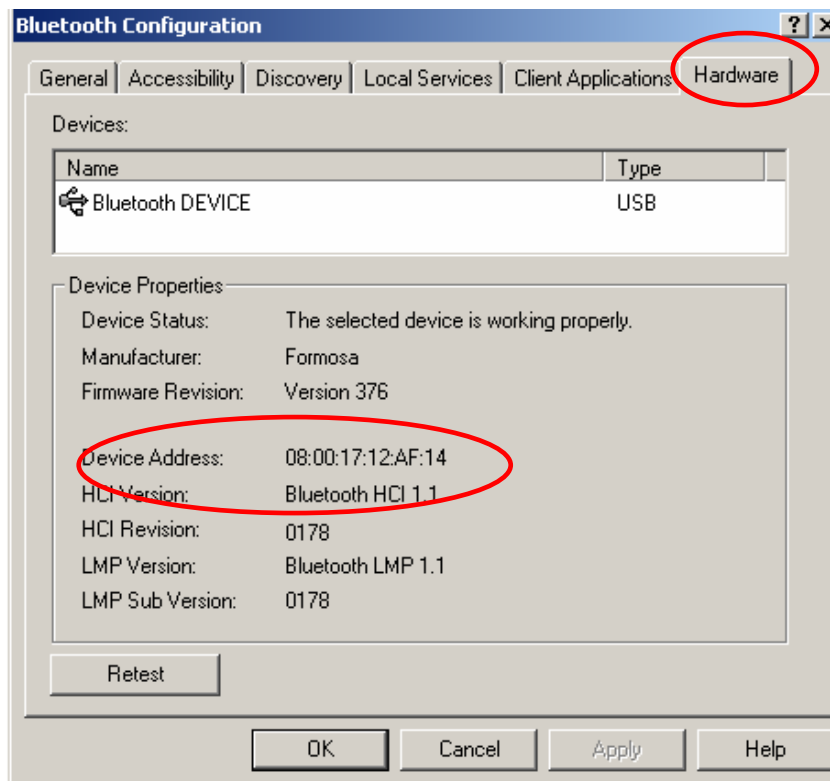


3. Acquire Bluetooth Address from the USB adapter

Right click on the  next to the clock and go to Advanced Configuration and click on the Hardware Tab (see below), the Device Address will be listed (08001712AF14). You will need to generate a **Code 128 Function 3** bar code like the example below that encodes the Bluetooth Address of the adapter, if you need assistance please call Metrologic Technical Support at 1-800-436-3876.

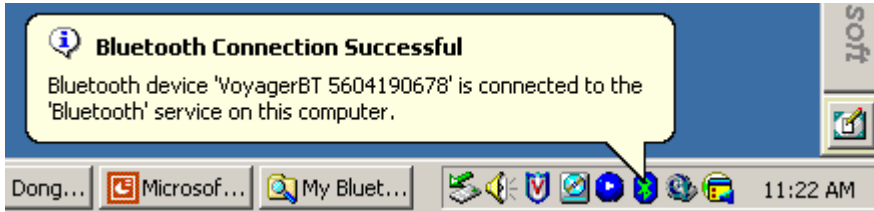


Example bar code only! Do not scan.



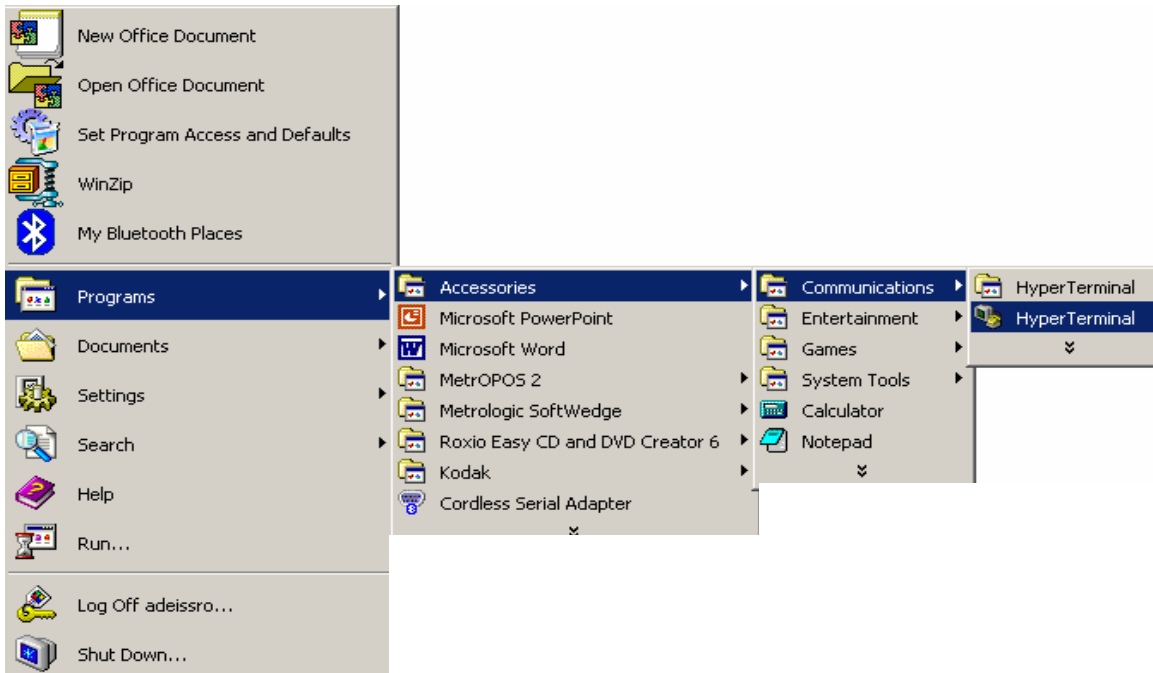
4. Initiate Connection

The MS9535 is defaulted to act as a client when connected to other Bluetooth devices. Communication is established by scanning the Bluetooth address code of the other device. **Scan** the bar code you created with **your Bluetooth device address** to initiate a connection. The following message will appear indicating a successful connection.

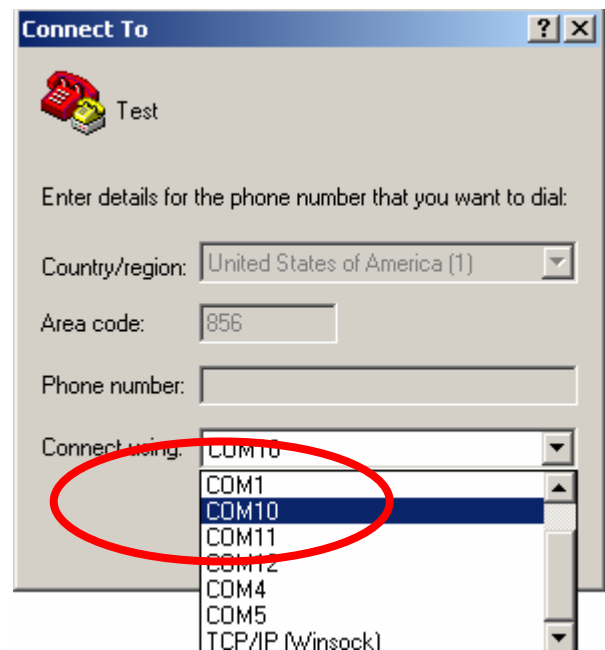


5. Validate a Serial Connection in HyperTerminal (Windows)

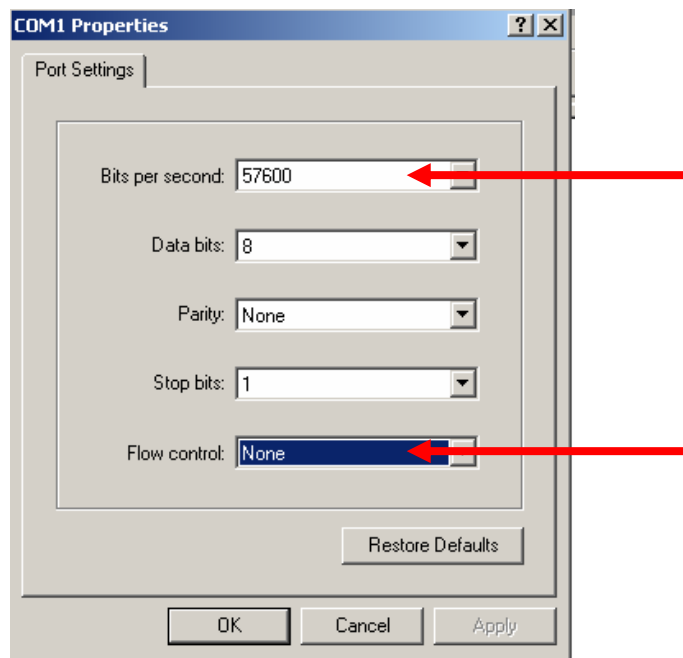
Click on Start/Programs/Accessories/Communications/HyperTerminal to start a HyperTerminal session.



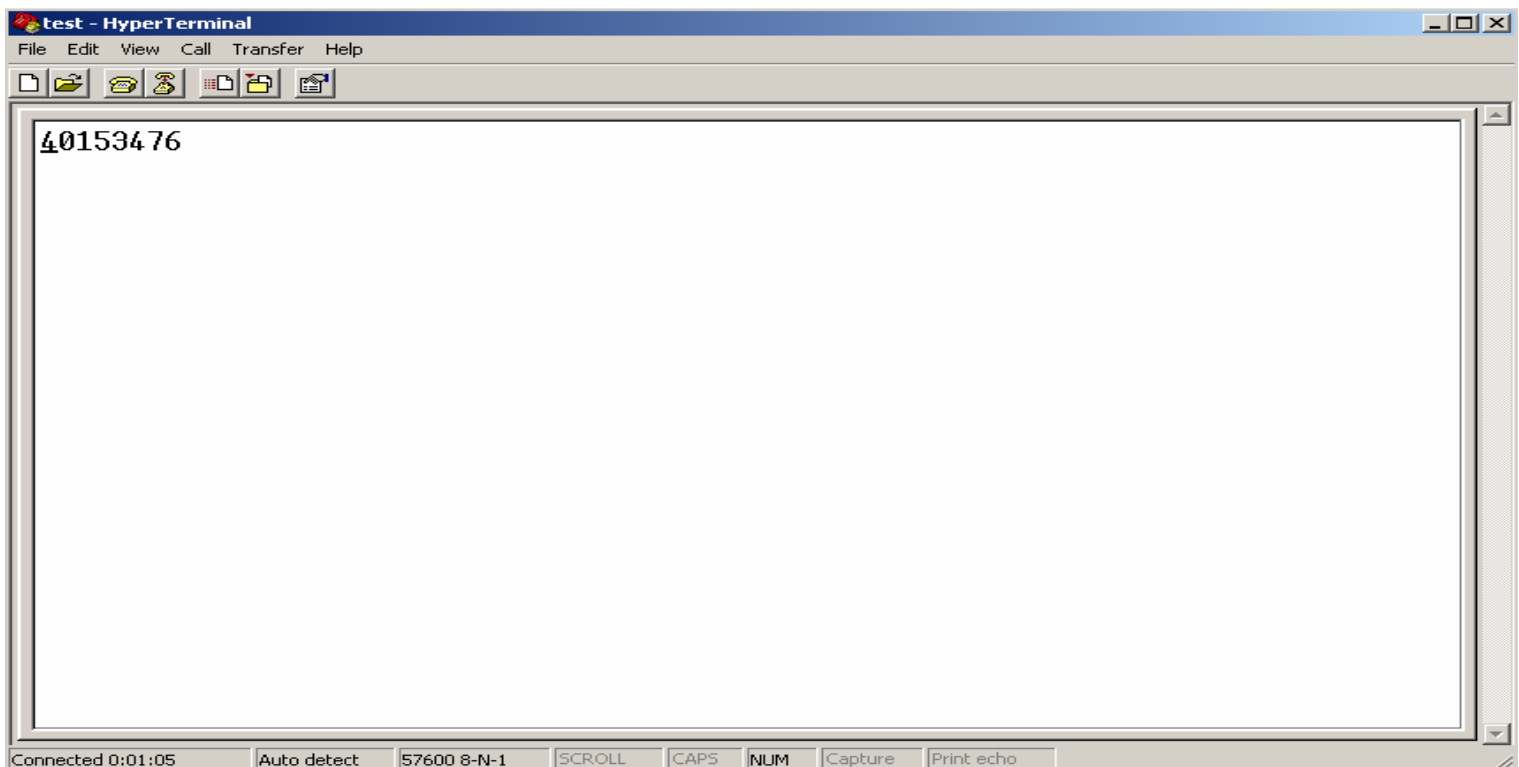
The New Connection window will appear, enter a name (Test) and click the OK button (below left). Select the COM port you are connected to (below right) and click OK. You can verify the COM port by right clicking on the Bluetooth icon next to the clock and go to Advanced Configuration and click on the Local Services Tab.



Select the following port settings and click OK.



Scan a test bar code to check communications. If you see the bar code data you have established communications and functioning properly as a serial device.



MS9535 VoyagerBT

Printed: January 2005
Status: Draft

Technical Support
1-800-436-3876

6. Use Softwedge utility to communicate directly to PC applications expecting keyboard data

If an application requires keyboard data, Metrologic's Softwedge converts data from serial data to keyboard data for PC applications like Word, Excel, or Notepad. You can download the Softwedge from the following link.

<ftp://ftp.metrologic.com/pub/download/Software/SoftWedge.exe>.

Install the Softwedge and run. Select appropriate COM Port; verify that Port Status is connected. Open Notepad and test scanner communications.

