



Configuration Instructions: Dual Cable IBM-OEM-USB Diva~scale w/EPOS2 Protocol

Filename: MS2320_K240_EPOS2.doc

Unit Type: MS2320 StratosH™ Series

Date: 05/31/2007

Order the appropriate hardware for this configuration. Model number and cables are listed here:

MK2320-40KD – FS USB/RS232

These cables are included with the kits:

57-57006x-N-3 – USB Cable (scanner)

57-57000A-N-3 – RS232 Cable with Female DB-9 connector (scale)

Scanner Configuration Bar Codes

Scan the following bar codes, one at a time, using the vertical window of the scanner. Wait for the confirmation beep tones after each bar code scan.

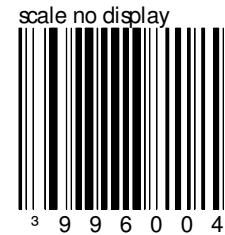
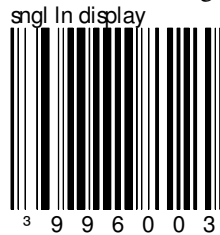


The scanner is now configured for IBM-OEM-USB.

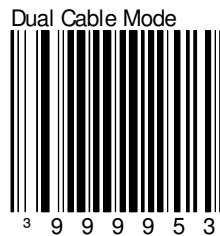
Scale Configuration

Scan the following bar codes, one at a time, using the vertical window of the scanner. Wait for the confirmation beep tones after each bar code scan.

Choose either Single line pole display or No pole display



Scan Dual Cable Interface





Configuration Instructions: Dual Cable IBM-OEM-USB Diva~scale w/EPOS2 Protocol

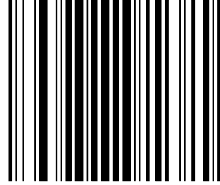
Filename: MS2320_K240_EPOS2.doc

Unit Type: MS2320 StratosH™ Series

Date: 05/31/2007

Set the scale RS232 protocol to Serial EPOS

EPOS2 Protocol

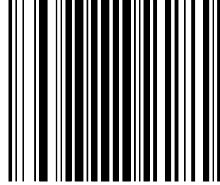


3 9 9 6 0 1 4

Communication Port Settings: 2400 Baud Rate; 7 Data Bits; 1 Stop Bit; Even Parity

Save the Data

Save Data



3 9 9 6 0 4 5

The scanner is now configured for Dual Cable Serial Data.

To Test Scale:

Open MetroOPOS Administrator from the start menu.

1. Click the x to close the configuration Wizard and check “do not show at startup”
2. Click “New Profile” icon to bring up the New Profile window.
 - a. Select Scale
 - b. Name the Profile
 - c. Select the Interface as RS232
 - e. Select the COM port the scale is using
 - f. Select Scale Type: Dual-Cable
 - g. Select Unit of Measure
 - h. Select Display
 - i. Click “Save”
3. A window will notify that the Device Profile has been created successfully. Click “OK”
4. Once the device has been created successfully, a window will appear. Click “No”.
5. Perform the Detailed test to ensure functioning with MetroOPOS
 - a. Select the “Detailed Test” icon to bring up Simple Test.
 - b. Select the Device Class: Scale
 - c. Select the Profile Name used for the scale
 - d. Click “Claim”
 - e. Click “Open”
 - f. Click “Read Weight”

Weight Data should display the weight in either pounds or metric.



Configuration Instructions: Dual Cable IBM-OEM-USB Diva~scale w/EPOS2 Protocol

Filename: MS2320_K240_EPOS2.doc

Unit Type: MS2320 StratosH™ Series

Date: 05/31/2007

Dual cable communication

Testing Scanner

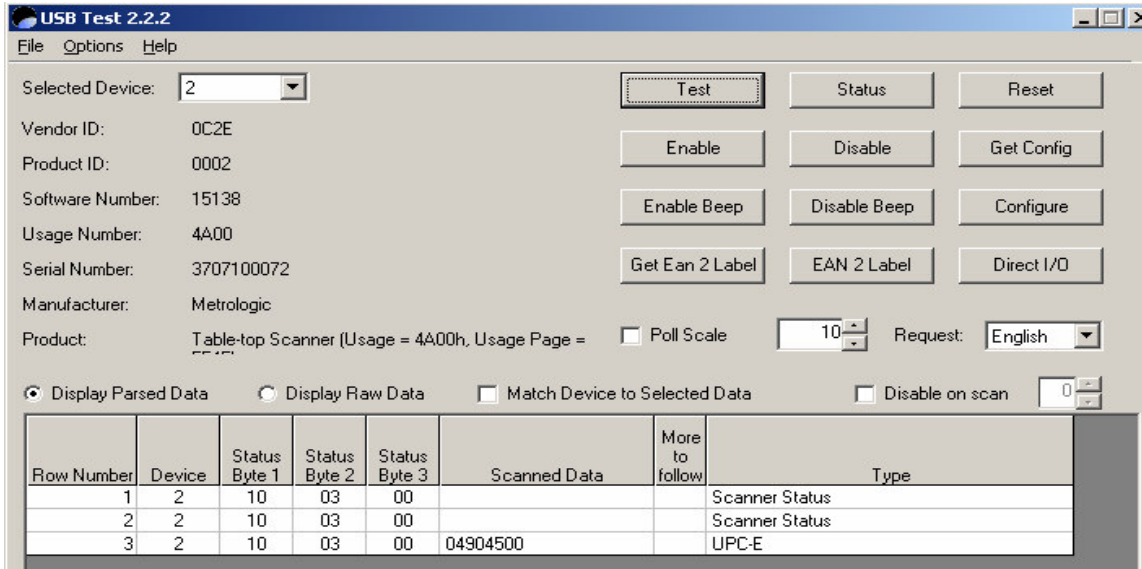
The scanner/scale programming is complete. Next, install the USB TEST Utility. This is available at the following location:

ftp://ftp.metrologic.com/pub/download/Tech_Support/

Download and install USBTest2.exe. It should install the USBTest2 utility in your program group.

Once Installation is complete; Start the “USBTest 2” from Start menu: Start/Programs/USBTest2/
Select Device number that’s Manufacture is Metrologic & Product is Table-top Scanner.

Click “Test”; Click “Enable”; Scan a Product Bar Code



Document Revision Table:

Revision Level	Date	Revised By	Changes Made
1.0	05/31/2007	J. Willis	Initial Document