



**Configuration Instructions: Single Cable
IBM-OEM-USB**

Filename: MS2320_K140_USB.doc

Unit Type: MS2320 StratosH™ Series **Date:** 05//23/07

Order the appropriate hardware for this configuration. Model number and cables are listed here:

MK2320-40KD FS USB / RS232

**NOTE: MK2320KD-60B238 will not work, until the additional bar codes are scanned.

57-57006A-N-3 – USB Cable with standard USB connector – non-locking

57-57200A-N-3 – USB Cable with locking PowerPlus USB connector

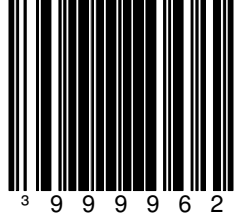
If you have a dual cable kit, MK2x20Kx-6xB**240**, you must first configure the scale for single cable operation. See the Configuration Addendum for directions or scan the additional bar codes

Use the following barcodes to program the Stratos scanner/scale.

Programming barcodes must be scanned with the vertical window on the Stratos scanner scale. This helps prevent accidental scanning of program barcodes when you flip pages in the configuration guide, etc.

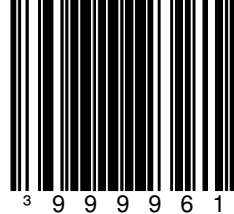
Scan these bar codes, in the order given:

Single Cable USB LE

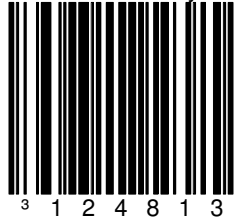


OR

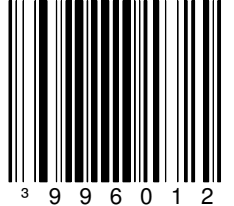
Single Cable USB KC




Enable 3 scale bytes



Scale Cable Interface

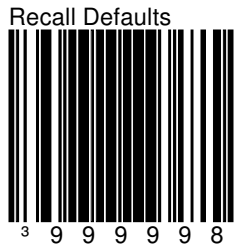


	Configuration Instructions: Single Cable IBM-OEM-USB
Filename: MS2320_K140_USB.doc	Unit Type: MS2320 StratosH™ Series Date: 05//23/07



Wait approximately 3 minutes while the unit changes configuration. Blue LEDs will become steady and pole display will display “0.000”

IF YOU NEED TO START OVER!!



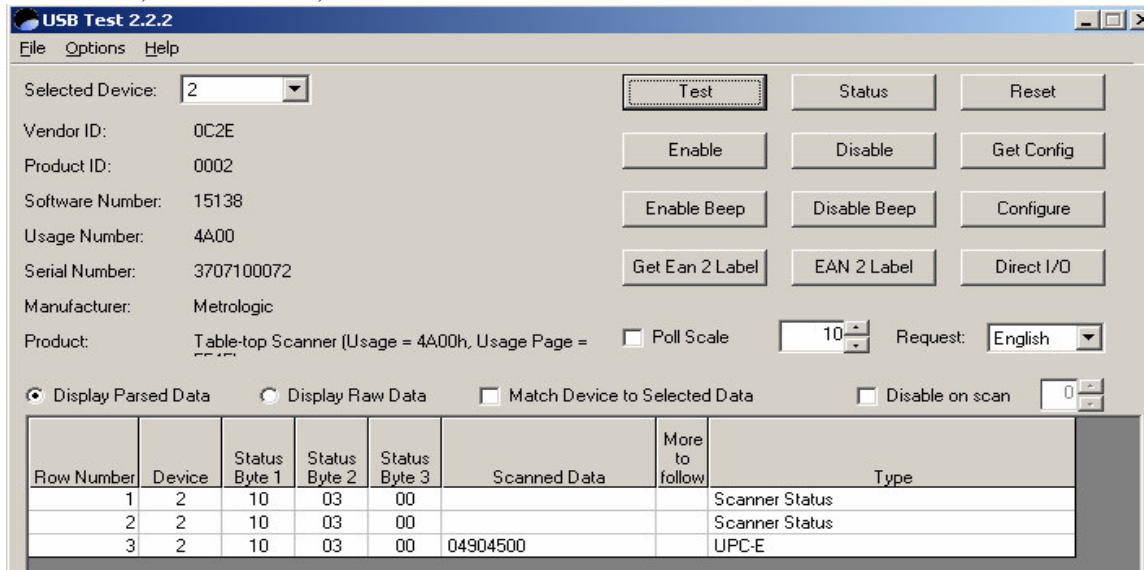
Note: you may need to disconnect the USB cable from the PC, wait a few seconds, and then reconnect. This will ensure that the PC recognizes the USB device. You can also check devices in Device manager.


The scanner/scale programming is complete. Next, install the USB TEST Utility. This is available at the following location:

[ftp://ftp.metrologic.com/pub/download/Tech_Support/](http://ftp.metrologic.com/pub/download/Tech_Support/)

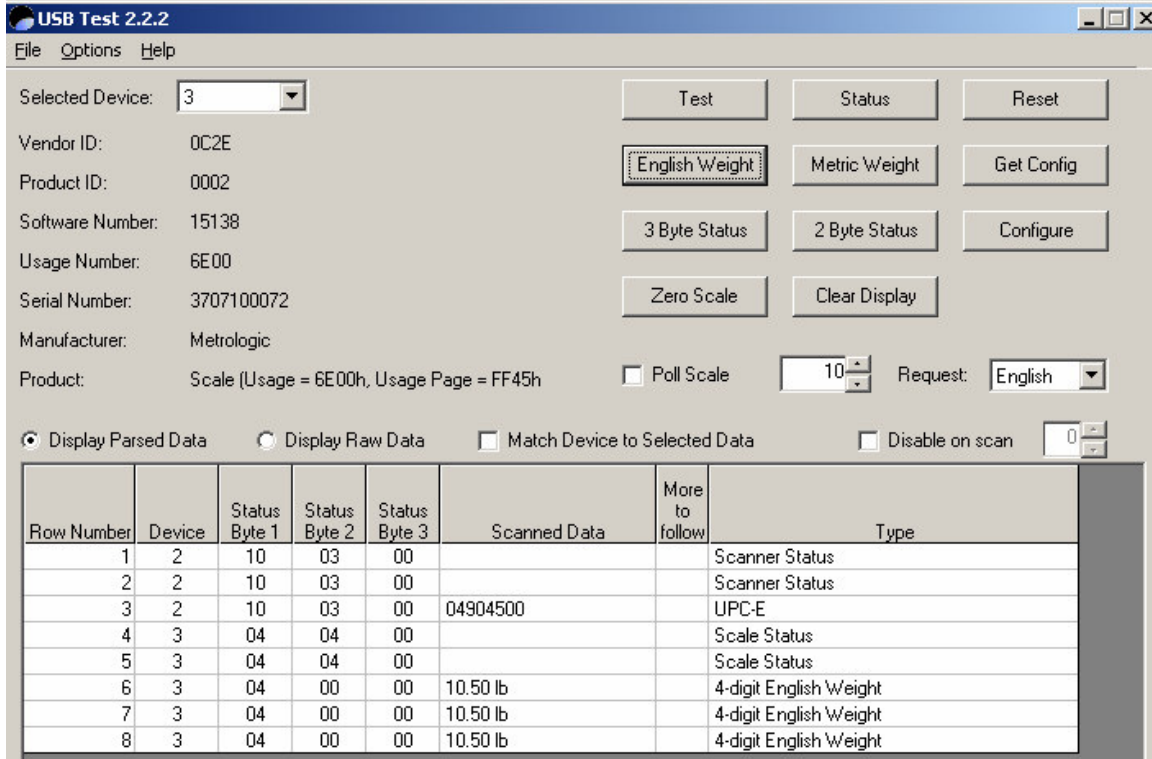
Download and install USBTest2.exe. It should install the USBTest2 utility in your program group.

Once Installation is complete; Start the “USBTest 2” from Start menu: Start/Programs/USBTest2/
Select Device number that’s Manufacture is Metrologic & Product is Table-top Scanner.
Click “Test”; Click “Enable”; Scan a Product Bar Code



	Configuration Instructions: Single Cable IBM-OEM-USB
Filename: MS2320_K140_USB.doc	Unit Type: MS2320 StratosH™ Series Date: 05//23/07

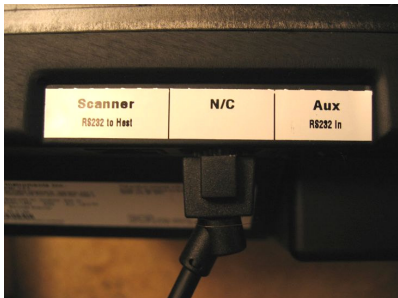
Select Device number that's Product is Scale
Click "Test"; Click "English Weight"



Row Number	Device	Status Byte 1	Status Byte 2	Status Byte 3	Scanned Data	More to follow	Type
1	2	10	03	00			Scanner Status
2	2	10	03	00			Scanner Status
3	2	10	03	00	04904500		UPC-E
4	3	04	04	00			Scale Status
5	3	04	04	00			Scale Status
6	3	04	00	00	10.50 lb		4-digit English Weight
7	3	04	00	00	10.50 lb		4-digit English Weight
8	3	04	00	00	10.50 lb		4-digit English Weight

Note: you may need to disconnect the USB cable from the PC, wait a few seconds, then reconnect. This will ensure that the PC recognizes the USB device. (Exit USBTest2 first) You can also check devices in Device manager.

Note: You can convert an existing RS-232 Stratos to a FS USB Stratos by adding the appropriate daughter card and cable. See the document "installing_daughter_card.doc". You must also connect the USB cable to the middle port on the left side of the scanner, marked as "FS USB to host" on the USB units, or as a "N/C" on the RS-232 units, as shown below:



Document Revision Table:

Revision Level	Date	Revised By	Changes Made
1.0	05/23/07	J. Willis	Initial Document
1.1			