



**Configuration Instructions: Dual Cable RS232
Diva~scale w/OPOS Protocol**

Filename: MS2320_K141_OPOS_Instructions.doc

Unit Type: MS2320 StratosH™ Series **Date:** 05/22/2007

Order the appropriate hardware for this configuration. Model number and cables are listed here:

MK2x20-40D RS232

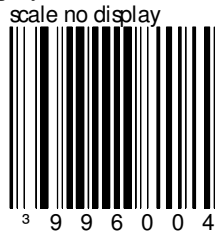
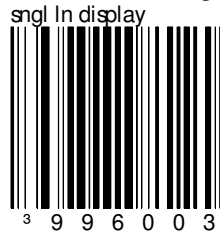
These cables are included with the kits:

(2) 57-57000A-N-3 – RS232 Cable with Female DB-9 connector

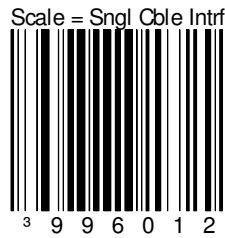
Scanner & Scale Configuration

Scan the following bar codes, one at a time, using the vertical window of the scanner. Wait for the confirmation beep tones after each bar code scan.

Choose either Single line pole display or No pole display



Set the scale to communicate via the single-cable interface



Scanner/scale **Single Cable** RS232 OPOS, English Scale Defaults



Communication Port Settings: 9600 Baud; 8 Data bits; 1 Stop Bit; No Parity



IF YOU NEED TO START OVER!!

Recall Defaults

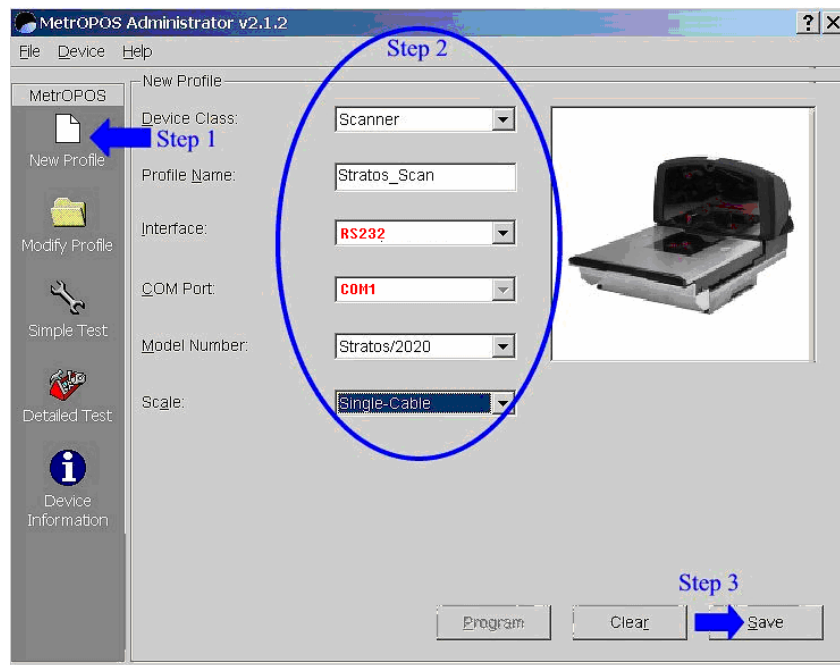


The scanner/scale programming is complete. Next, install the OPOS driver, and create scanner and scale profiles. **In order to set up the OPOS device profiles for the scanner and scale,** you must have downloaded and installed the MetrOPOS drivers and utility. This is available on the Metrologic corporate website at the following location:
<http://www.metrologic.com/corporate/guides.htm>


Choose the option under download software by name on that page to select **MetrOPOS Driver**. Download and install the driver. It should install the MetrOPOS2 Administrator in your program group.

Setup the profiles using the MetrOPOS2 Administrator for both the scanner and the scale. To do so, Start the MetrOPOS Administrator. The setup wizard may appear, if it does, just close the window.

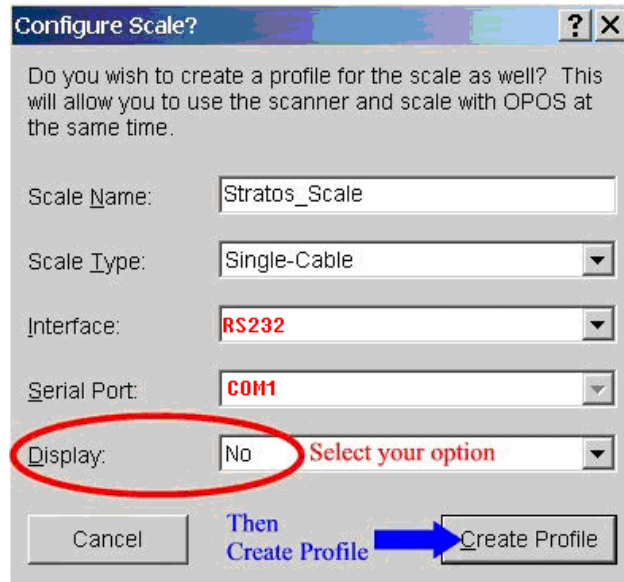
Next, select “New Profile” and setup the options for the scanner as shown below:
(Note: You can name the profile whatever you want, and be sure to select RS232 and Single Cable)



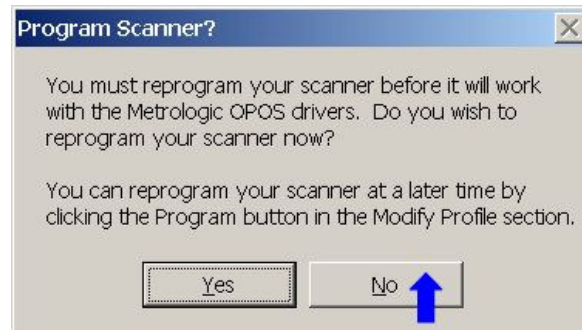
Once the appropriate options are selected for the profile as shown above, click “Save” and a message should appear prompting you to create the scale profile. Setup as shown: then click on “Create Profile”.

	Configuration Instructions: Dual Cable RS232 Diva~scale w/OPOS Protocol
Filename: MS2320_K141_OPOS_Instructions.doc	Unit Type: MS2320 StratosH™ Series Date: 05/22/2007

Note: Be sure to use a different name for the scale profile!



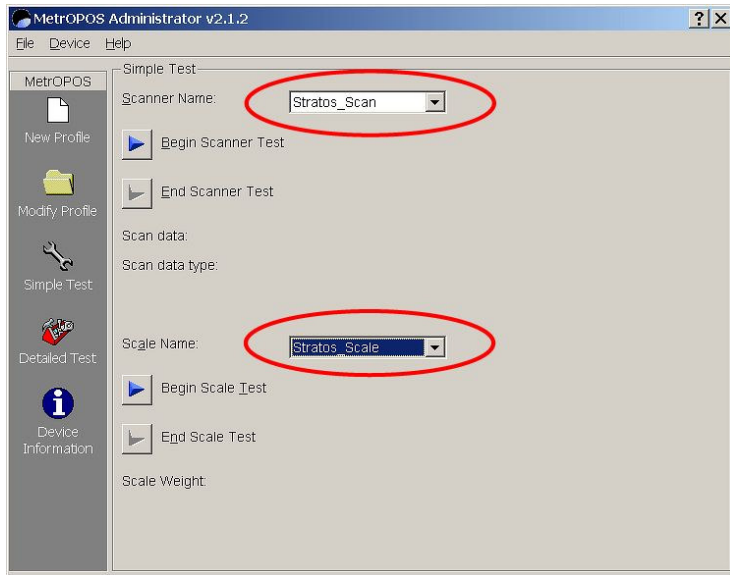
After you create the profile, you should be presented with a message reminding you that you have to program the scanner, and asking if you want to program the scanner now. Just answer this message with “NO” and setup the scanner using the barcodes in the next section.



This should complete setting up the required profiles for the OPOS driver.

The setup is now complete!

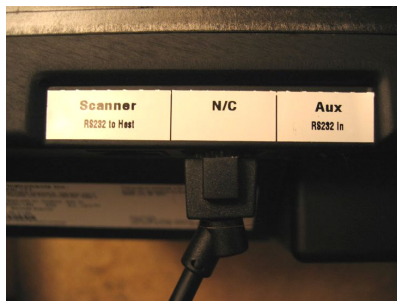
You should now test the scanner to ensure you can communicate with both the scanner and the scale. To do so, select the Simple Test option in the MetrOPOS administrator, then select the appropriate profile names for the scanner and the scale. Then select “Test” on each device and you should see the data from the scanner or scale displayed. See screenshot below:



If the test is successful, you are ready to connect the device and test with your application. If there are any problems, go back and check each step in setup to validate that nothing was missed or mistyped. If problems persist, contact Metrologic Support at 1-800-436-3876 (1-800-ID-METRO).

Note: you may need to wait a few seconds before reading weight. This will ensure that the PC recognizes the scale.

Note: You can convert an existing RS-232 Stratos to a FS USB Stratos by adding the appropriate daughter card and cable. See the document “installing_daughter_card.doc”. You must also connect the USB cable to the middle port on the left side of the scanner, marked as “FS USB to host” on the USB units, or as a “N/C” on the RS-232 units, as shown below:



Document Revision Table:

Revision Level	Date	Revised By	Changes Made
1.0	05/23/2007	J. Willis	Initial Document